



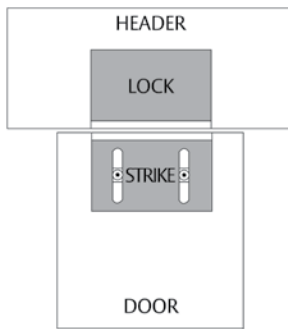
# SAM-Shear Aligning Magnalock®



**Application** - 1200 lb. holding force Shear Aligning Magnalock mounts fully concealed into wood, steel or aluminum doors. SAM can also be installed in any position on the door - top, side or bottom and is ideal for swing through and sliding doors.

## Features and Benefits

- Patented instant release circuit - no residual magnetism
- Mounts easily with a minimum of tools
- Fully sealed electronics - tamper proof and weatherproof
- Mounted using steel machine screws
- Architectural brushed stainless steel finish (US32D/630)
- All ferrous metal surfaces plated to MIL specification
- Hardware accessories available to configure any opening type including mounting brackets
- Ten feet [3.05m] of jacketed, stranded conductor
- Automatic dual voltage - no field adjustment required
- Lock options include *BondSTAT* magnetic bond sensor and integrated door position switch
- UL Listed



## Specification Data

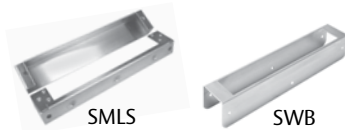
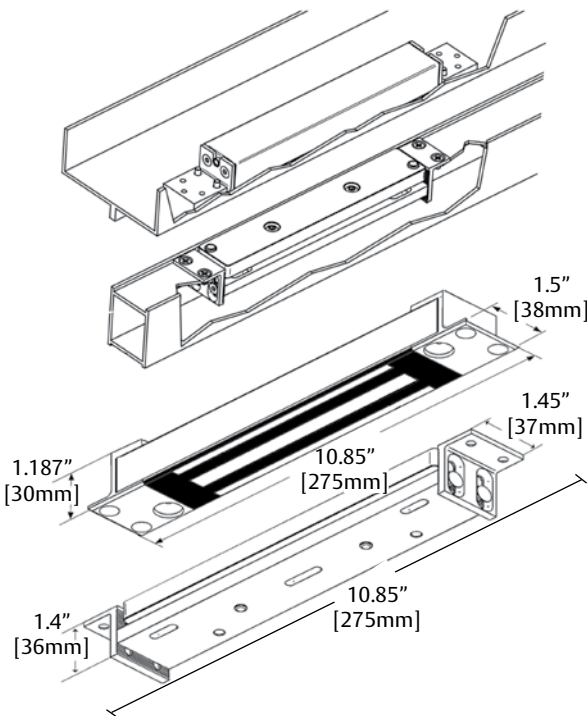
Holding Force: 1,200 lbs. [544 Kg.]  
 Current Draw and Voltage: 320mA at 12VDC; 170mA at 24VDC  
 Operating Temperature: -40 to +140F [-40 to +60C]  
 Shipping Weight: 6 lbs.  
 Warranty: MagnaCare Lifetime Replacement Warranty

## How To Order

Part #	Description
SAM	Shear Aligning Magnalock
SAMB	SAM, Mag Bond Sensor
SAMBD	SAM, Mag Bond Sensor, Door Position Switch
SAMD	SAM, Door Position Switch
SAMN	SAM, Narrow Strike Plate

## Optional SAM Brackets & Accessories

Prefix	Description
SMLS	Surface Mount Lock Housing
SMSS	Surface Mount Strike Housing
SWB	SAM Wood Bracket



U.S. Patents:  
 #6,007,119, #6,135,515  
 NEMA: 4X IEC: IP 66

