

WatchNET

INTEGRATED DIGITAL TECHNOLOGIES

8 CHANNEL HIGH PERFORMANCE
EMBEDDED DIGITAL VIDEO RECORDER



E-24008RTS-KIT



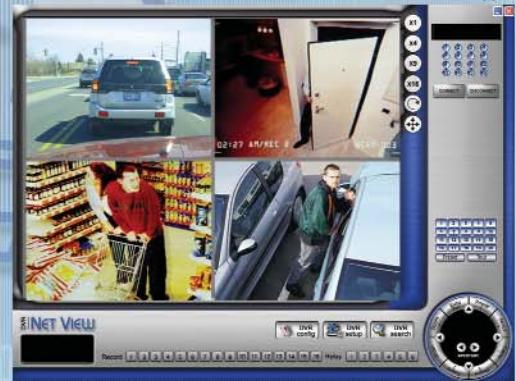
- ✓ *Quality*
- ✓ *Reliability*
- ✓ *Performance*

FEATURES

- Real-Time Recording on all Channels with Audio
- Hi Resolution and Crisp Image Quality
- Integrated Web Server With DVR Management and Search Function
- Remote Audio/Video Monitoring and Search Recordings with Sound **
- Covert Camera Function
- Reliable Embedded Operating System
- Full Function Remote Client Software
- Powerful Pentaplex DVR Functions, Simultaneous Live Display, Recording, Playback, Archive and Remote Transmission
- Backup Video and Audio to CD, DVD or USB Key for Easy Storage
- Network Play Back and Remote Storage
- PTZ Control With Various Protocols and Built in RS232/485 Output
- Alarm and Automation With Input/Output Controls
- VGA Plus Dual CCTV Monitor Outputs for Discreet Playback and Setup Functions
- Jog Shuttle Playback and Setup Control with Built-in Numeric Keyboard
- Smart Hard Disk Management and Auto Format Functions

SPECIFICATIONS

Camera Inputs:	8 Channel
Image Resolution:	704 X 576 (D1) Play Back, 352 X 288
Record type:	Normal, motion and sensor with schedule
Record speed:	240 fps (Real-time all channels)
Search:	2X, 4X and 8X fast speeds with selectable slow speed rates
Compression:	H.264 with variable or fixed frame rate
Display output:	VGA, CCTV and spot monitor real time display
Operating system:	Linux based
Outputs:	3 Relay, RS 232 and RS 485 control
Capacity:	6 HDD Bays with CDRW/DVD
Encryption:	128Bit SSL
Inputs:	8 sensor inputs with power
Storage:	250GB SATA HDD/DVDRW
Backup:	Standard USB and CDRW (DVDR Optional)
HW Watchdog:	Auto restart on system abnormality
Transmission:	TCP/IP, LAN, WAN, ISDN and modem support



CE FC UL

tel. 1-866-843-6865 fax. 1-866-331-3341
sales@watchnetdvr.com

* One year on HDD

** Bandwidth is based upon transmission rate at ips and resolution setting.

Performance Delivered
www.watchnetdvr.com

Authorized Dealer:

